

New generation connection method

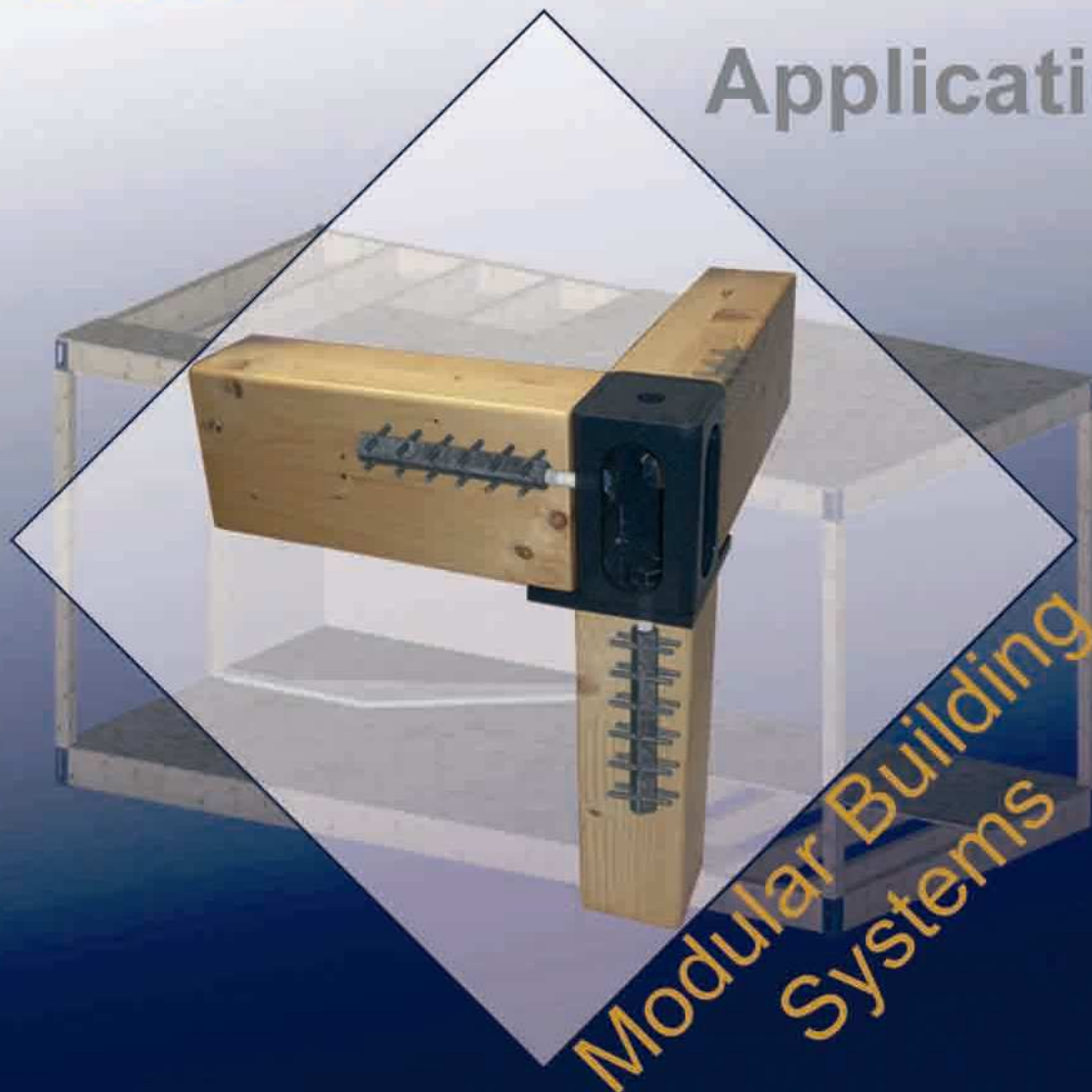
Easy.

Better.

Construct.

in[◇]duo[®] Anchor

Application



Modular Building
Systems

in[◇]duo[®]

Systemholztechnik
GmbH & Co. KG

An der Blankstraße 20
41352 Korschenbroich

Telefon: +49(0) 21 61-61 89-0

Telefax: +49(0) 21 61-61 89-29

E-Mail: info@induo.de

Internet: www.induo.de

New generation connection method

Modular Building Systems

INDUO®- Modular Building Technology offers multiple benefits in production and mounting



INDUO®- Modular Building Technology is based on:

- induo®- anchors
- induo®- modular angles



Production

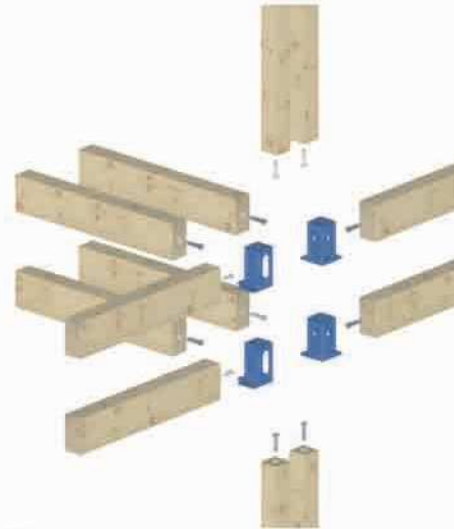
Factory produced with a pre-fabrication ratio of 80% and above. Optimization of production time by the use of pre-fabricated components and modules.

Alternative:

Mounting of module elements and completion as on-site fabrication, with the same pre-fabrication ratio as of ca. 600 sqm of building floor space.

We supply:

- induo®- anchors
- induo®- modular angles
- induo®- entire links



Short production and mounting times of turn-key residential buildings and building objects.



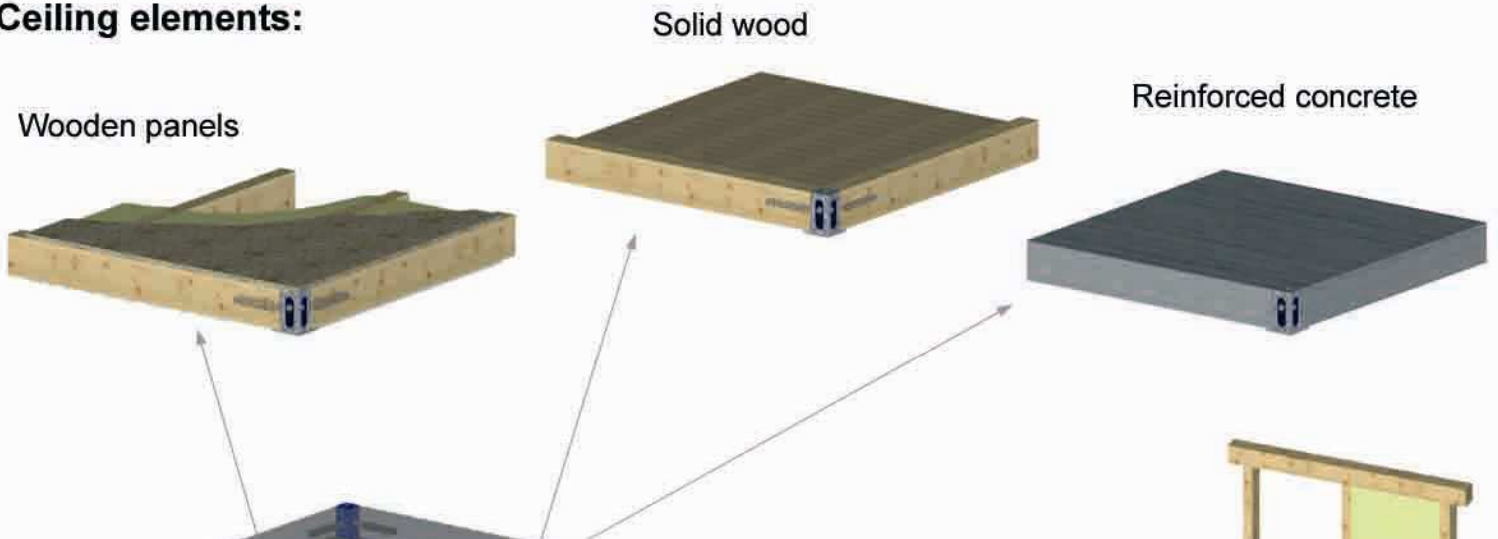
New generation connection method

Modular Building Systems

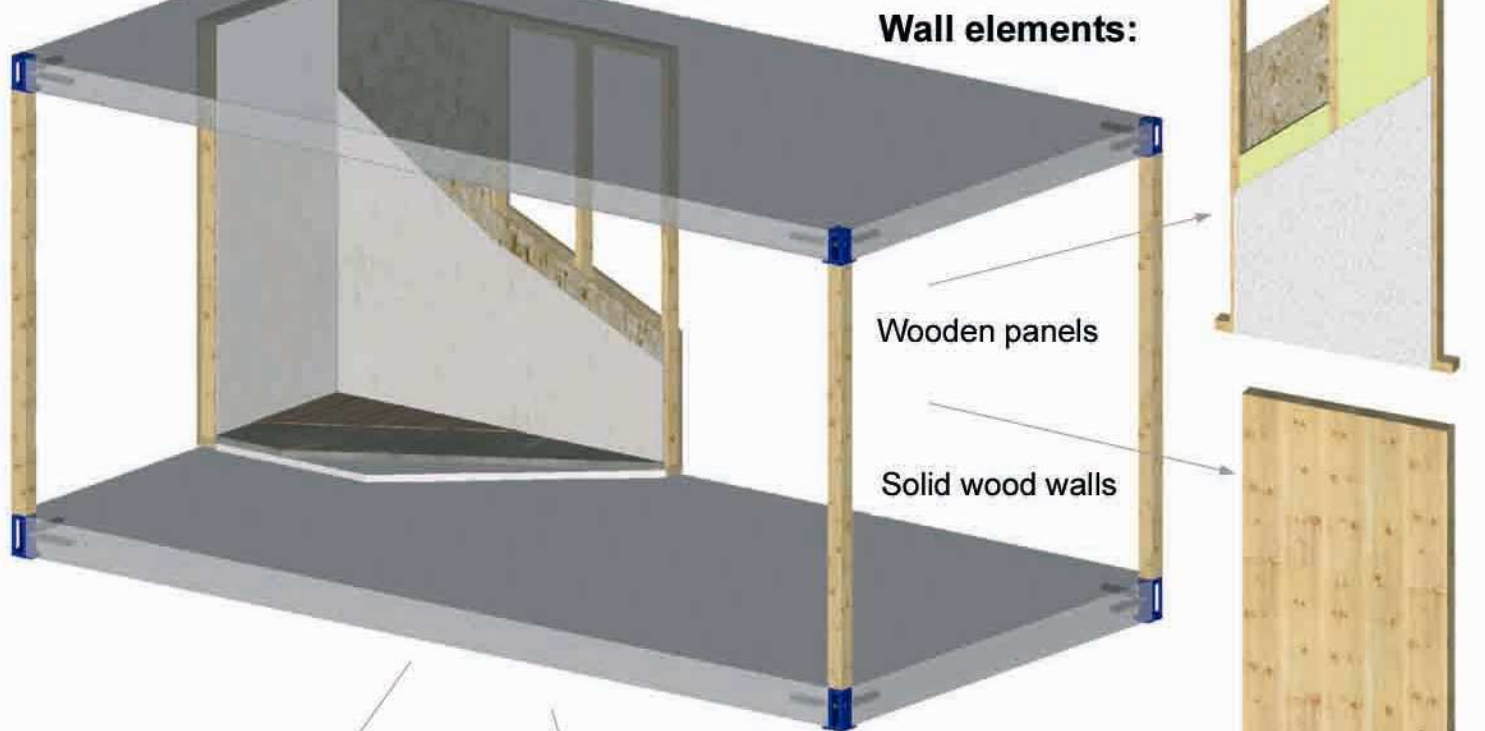
INDUO[®]-Modular Building Technology connects

Cross-material timber elements, even with reinforced concrete elements, and offers optimal solutions for fire protection, noise protection, thermal protection and efficiency.

Ceiling elements:



Wall elements:



Floor elements:

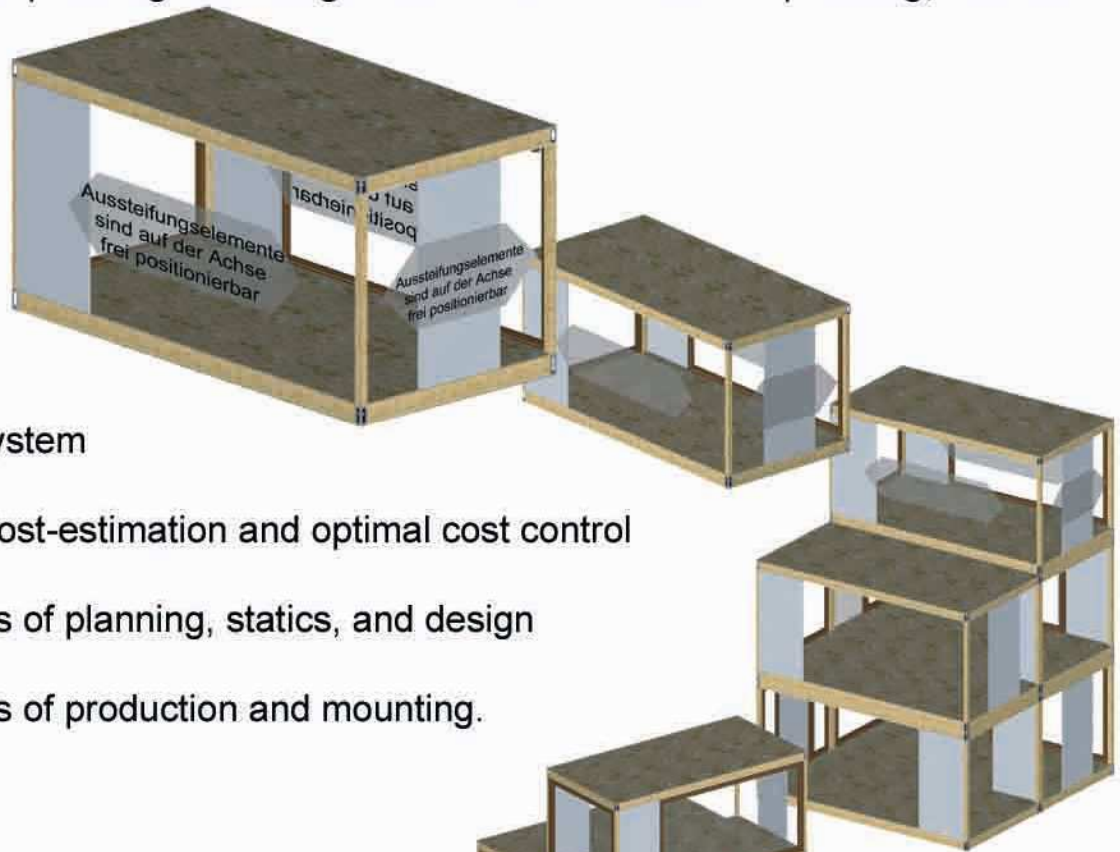


New generation connection method

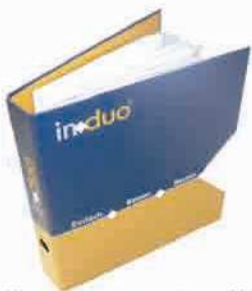
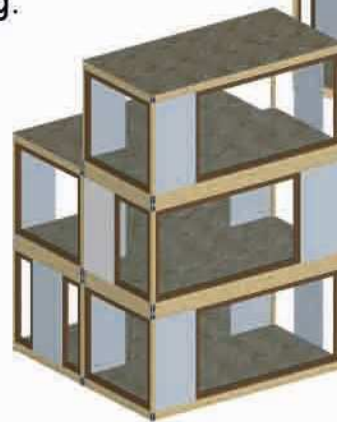
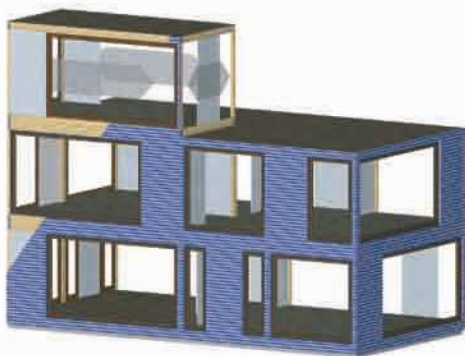
Modular Building Systems

INDUO®- Modular Building Technology enables

the architect, the structural engineer, and the production company statics, and design rules on the basis of the planning and design software clear and basic planning, with the benefit of:



- modular stiffening system
- fast and economic cost-estimation and optimal cost control
- cost savings in terms of planning, statics, and design
- cost savings in terms of production and mounting.



induo® planning file

- Sample application
- Sample calculations
- Connection details
- Application instructions
- System applications

Statics program

- Calculation acc. to DIN 1052 (08/2004)
- Calculation acc. to DIN 1052 (04/1988)
- Load application one- and two-sided
- induo block anchor

induo
Systemholztechnik
GmbH & Co. KG

An der Blankstraße 20
41352 Korschenbroich
Telefon: +49(0) 21 61-61 89-0
Telefax: +49(0) 21 61-61 89-29
E-Mail: info@induo.de
Internet: www.induo.de